

# 050-0200 Slimline Rotary Latch



This compact single rotor latch is designed for light to medium applications for on or off-highway entrance doors, compartments and access panels. It features a variety of trip levers and mounting axles for ease of mounting and application and is FMVSS 206 (ECE R11) compliant.

#### **DESIGNED FOR:**

- Thin, light or medium weight door applications
- Door weights up to 75 lbs. (34 kg)
- Door seal pressures of 20-25 lbs. (9-11kg) recommended for best results (not to exceed 50 lbs.(23 kg))
- Visible surface installation or concealed installation

#### **Global Locations:**

**TriMark Corporation**  
500 Bailey Avenue  
P.O. Box 350  
New Hampton, Iowa 50659  
United States  
Tel: 641-394-3188  
Fax: 641-394-2392  
1-800-447-0343  
www.trimarkcorp.com

**TriMark Europe**  
Cedar Court  
Walker road  
Bardon Hill  
Coalville LE67 1TU  
United Kingdom  
Tel: +44(0)1530 512460  
Fax: +44(0)1530 512461  
www.trimarkeu.com

**TriMark (Xuzhou)**  
Building A5 Jingwu Road  
Xuzhou Economic  
Development Zone  
Xuzhou, Jiangsu  
221004 PR China  
Tel: +86 516 8773 0018  
Fax: +86 516 8773 0058  
www.trimarkcn.com



TriMark. Interactive. Product. Selector



### AVAILABLE:

- Left or right hand configurations (left hand shown)
- With standard .265" diameter "thru" axles as shown or 1/4-20 UNC threaded axles (optional) or M6 x 1.0 threaded axles

### MATERIAL:

- Internal latch components: heat treated, smooth edge stamped steel
- Springs: non-corrosive stainless steel
- Case halves: high strength steel

### FINISH:

- Zinc plated, clear chromate steel components
- Stainless steel

**CAUTION:** Applications of this latch may fall within the requirements of FMVSS 206 (ECE R11) and SAE J839 safety standards. These safety related requirements are dependent on door application, e.g. front and rear hinged doors, sliding doors, or hinged upward swinging doors. The entire door hardware system must be included in the design/analysis process: latch, handle, lock mechanism, cables/rods/linkages, fasteners, hinges, etc. This ensures compatibility of all components within the hardware system. If FMVSS 206 (ECE R11) is a requirement, then all of the components within the door system must comply with strength, inertia and locking requirements as specified within the Standard. Note that this product complies with FMVSS 206 (ECE R11) when tested with approved TriMark Striker Bolts in accordance with SAE J839 and that this product meets FMVSS 206 (ECE R11) load requirements and may be used in FMVSS 206 (ECE R11) applications pending TriMark application approval.

### INSTALLATION:

- (3) 1/4-20 UNC grade 5-type or M6 x 1 class 8.8 or better fasteners are recommended
- Vertical mounting with support ramp at top is required for proper alignment and subsequent engagement of locking pawl and striker bolt
- Tighten to the fastener manufacturers' recommended torque value, however, do not exceed 120 in-lbs. (13.3 N-m)
- Note: In order to pass the FMVSS 206 strength requirements for this latch family, latches that contain 1/4-20 UNC or M6 X 1.0 threaded axles must utilize fasteners that have sufficient length so that the end of the fastener passes completely through the entire axle and extend beyond the outside surface of the latch case

### INTERNAL LUBRICATION:

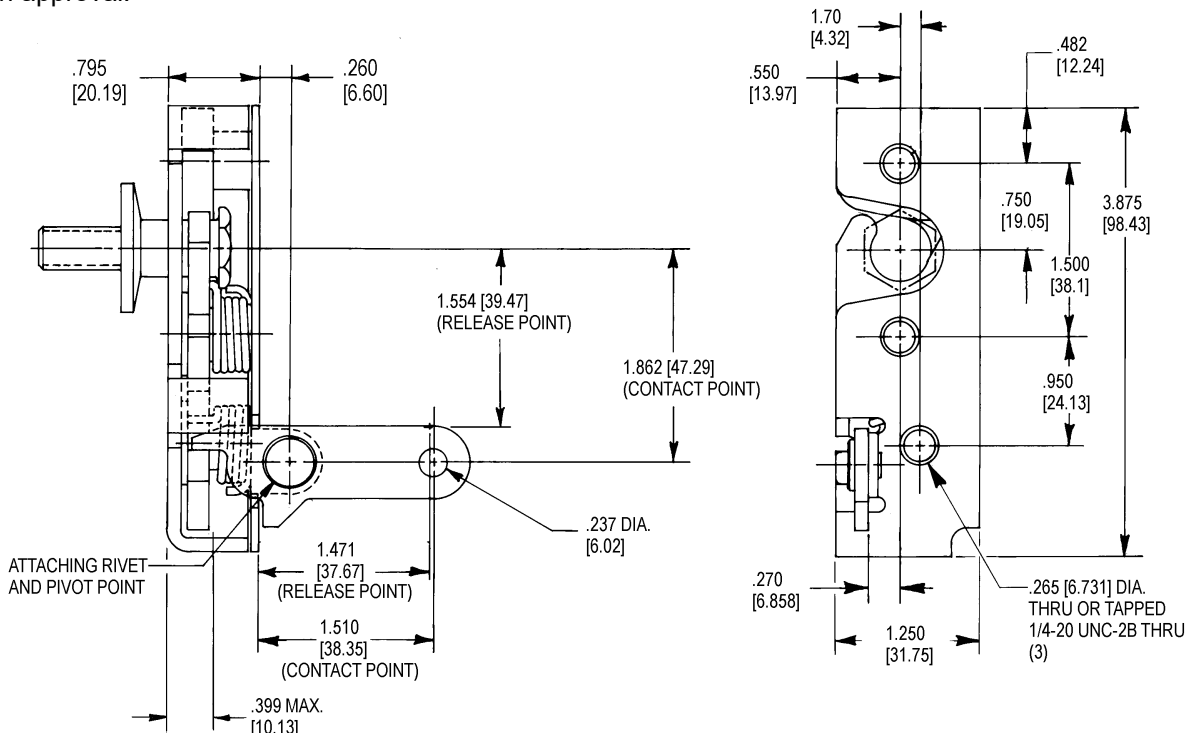
- Oven-cured dry lubricant is applied on all critical moving parts

**U.S. Patent No. 7,156,430**

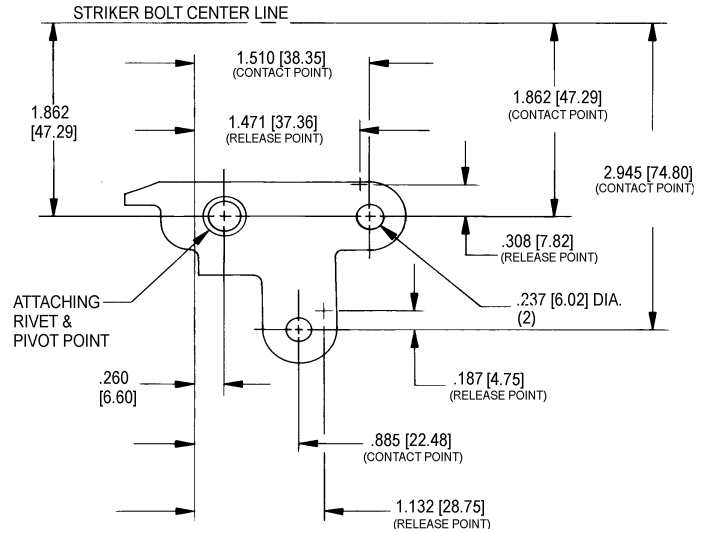
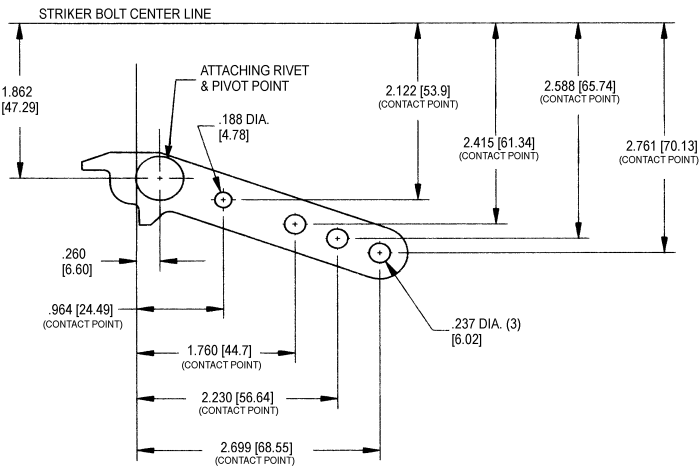
**U.S. Patent No. 7,320,488**

Individual part dimensions are for reference only. Refer to individual part drawings for complete dimensions, specifications, and installation procedures. Engineering assistance and application drawings are available.

For more information visit  
[www.trimarkcorp.com](http://www.trimarkcorp.com)



## Optional Trip Levers (In Reference to Striker Bolt Centerline)



## Optional Push-Button Release Configuration

